

MyBabiie®

For little people who dream big

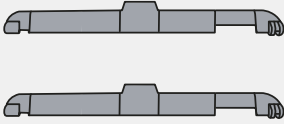
MBBC1 My Babiie Closer Bedside Crib

Suitable for use with beds that have a slatted frame

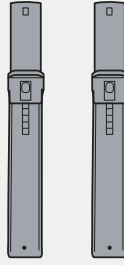


IMPORTANT! KEEP FOR FUTURE REFERENCE

Bedside crib parts



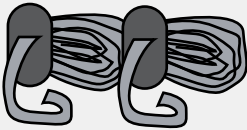
2 x Feet



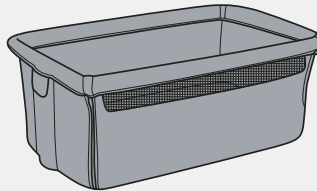
2 x Side arms



Base cross bar



2 x bed fastening straps



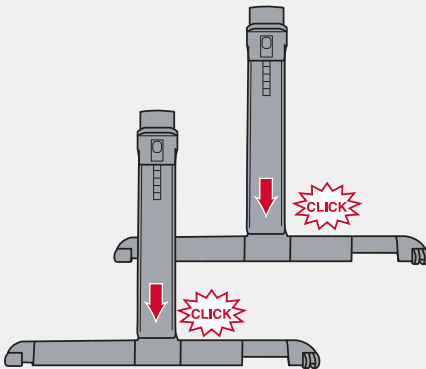
Crib, including mattress



Carry Bag

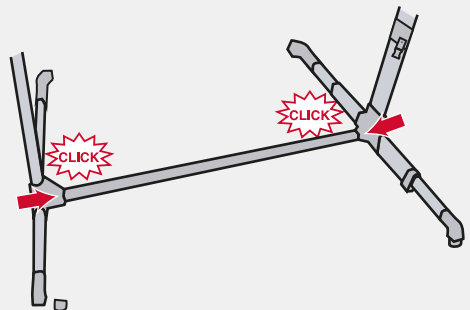
Assembly and Use

1 Attach side arms into feet



WARNING: make sure that the buckles are on the same side as the adjustable feet

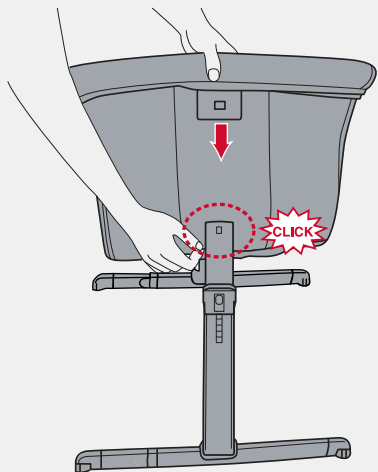
2 Join the 2 feet with the base cross bar



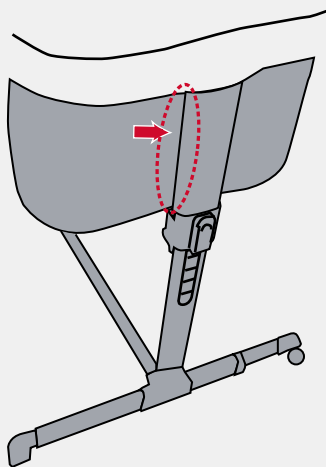
Your child's safety is your responsibility

If you have a problem with this product or require replacement parts, please visit www.mybabiie.com/support
Register your product at: www.mybabiie.com/warranties

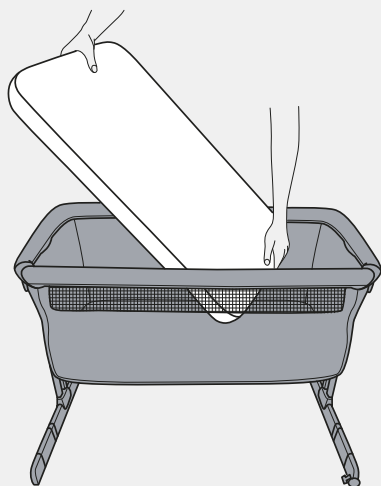
- 3** Push the crib down onto the 2 side arms. Ensure it clicks into place securely both sides



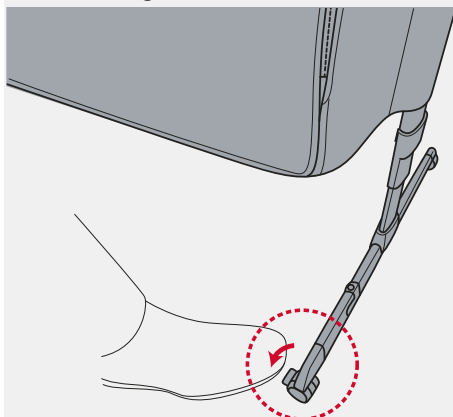
- 4** Fasten the velcro fabric covers on each side of the crib



- 5** Insert the included mattress



- 6** Use the wheel locks on each side to prevent the crib from rolling



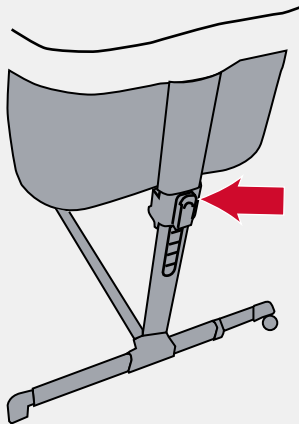
WARNING: When using as a standalone crib (not bedside) ensure that both feet are fully extended and locked

Your child's safety is your responsibility

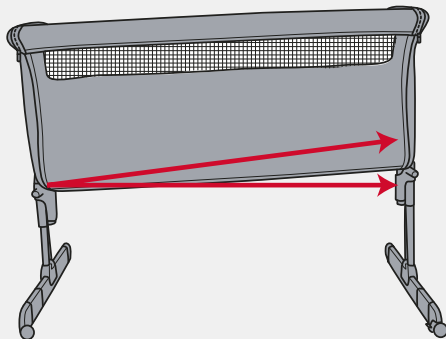
If you have a problem with this product or require replacement parts, please visit www.mybabiie.com/support

Register your product at: www.mybabiie.com/warranties

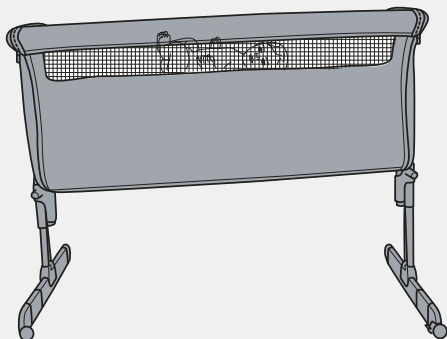
- 7** The height of the crib can be adjusted by simultaneously pressing the side buttons and lifting. Ensure it has correctly clicked into place before use



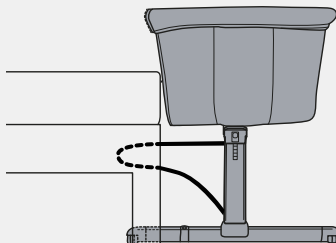
- 8** The crib can be inclined with a maximum variance of 2 positions between one leg and the other



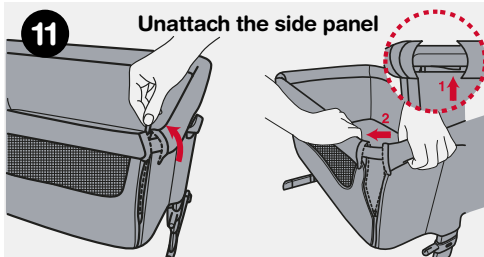
9



- 10** Co-Sleeping Mode (Fixing to the bed).
Read page 9 of this manual

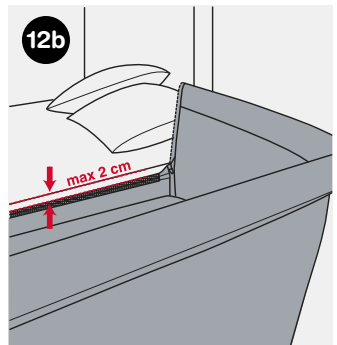
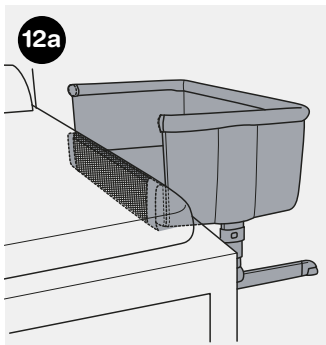
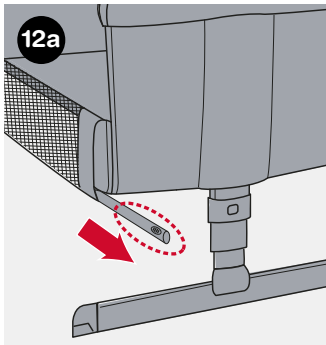


- 11** Unattach the side panel



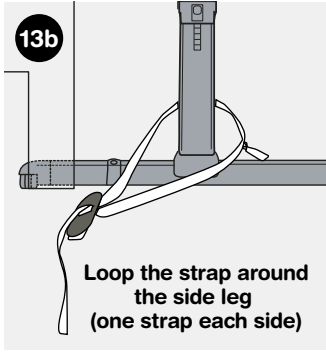
Your child's safety is your responsibility

If you have a problem with this product or require replacement parts, please visit www.mybabiie.com/support
Register your product at: www.mybabiie.com/warranties



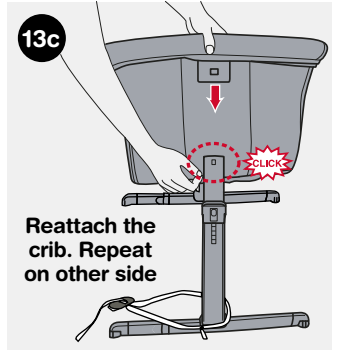
13a Attaching the straps

Release the crib from the side leg



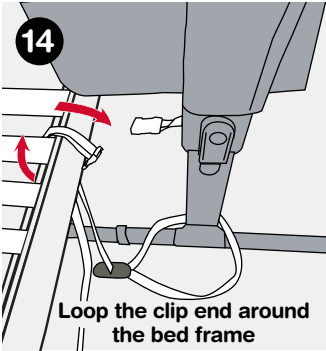
13b

Loop the strap around the side leg (one strap each side)



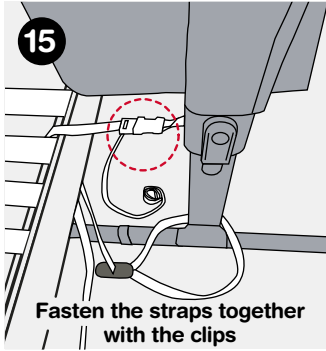
13c

Reattach the crib. Repeat on other side



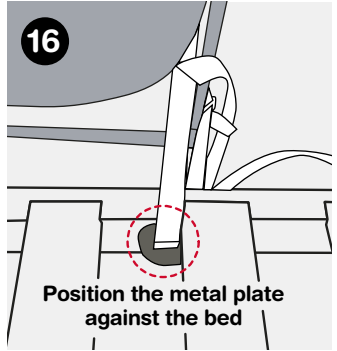
14

Loop the clip end around the bed frame



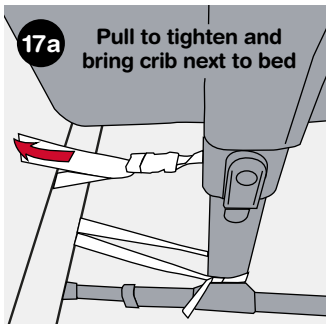
15

Fasten the straps together with the clips



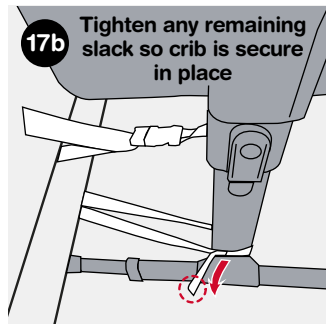
16

Position the metal plate against the bed



17a

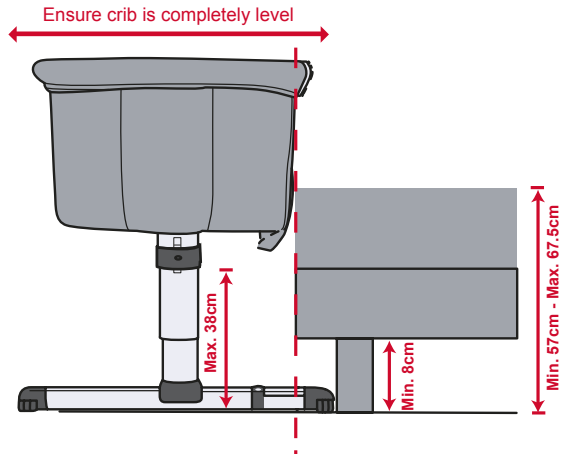
Pull to tighten and bring crib next to bed



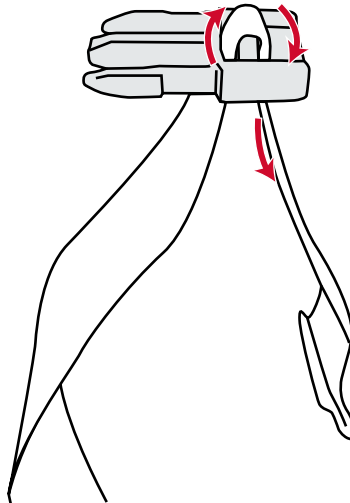
17b

Tighten any remaining slack so crib is secure in place

WARNING: Once attached to the bed, you must ensure the crib is level and not tilted at all and is completely flat to avoid baby from rolling.



WARNING: Check that the strap adjusters are correctly fitted to prevent loosening of the straps and creation of dangerous gaps during use.



Your child's safety is your responsibility

If you have a problem with this product or require replacement parts, please visit www.mybabiie.com/support
Register your product at: www.mybabiie.com/warranties

IMPORTANT, RETAIN FOR FUTURE REFERENCE: READ CAREFULLY

WARNING: BEFORE USE, REMOVE AND DISPOSE OF ALL PLASTIC BAGS AND PACKAGING MATERIALS AND KEEP THEM OUT OF REACH OF CHILDREN.

WARNING: This product is intended for use for babies aged between 0 and 6 months, weighing up to a maximum of 9 kg.

WARNING: When a child is able to sit, kneel or to pull itself up, the product should not be used anymore for this child.

WARNING: Do not use the product when any part is broken, torn or missing. Do not replace missing, damaged or broken parts with non-original components or components not approved by My Babiie.

WARNING: Read the instructions for use for the list of components. Examine the product regularly to make sure that there are no loose, damaged or missing parts.

WARNING: Always use all parts needed for each configuration of use.

WARNING: Be aware of the risk of open fires and other sources of strong heat, such as electricbar fires, gas fires, etc.

· Before assembly, check that the product and all of its components have not been damaged during transportation.

Should any part be damaged do not use and keep out of reach of children.

· Make sure that the person using the product knows how to do it in the safest way.

WARNING: The product is ready for use only when the locking mechanisms are engaged. Make sure they are securely fixed before use.

WARNING: When your child is unattended in the product in "crib configuration", always make sure that the side is raised and the zippers are closed completely.

· When the product is being used, and above all in "crib configuration", the wheels must always be locked.

· All operations for opening, adjusting, fastening and positioning the product must be carried out by an adult.

· Before using in "Co-Sleeping configuration (fastened to bed)," make sure the product is fastened and positioned correctly.

WARNING: To prevent the risk of trapping the child's head, the crib in "Co-Sleeping configuration (fastened to the bed)" must be duly fastened to parents' bed according to the instructions for use with the fastening belts.

WARNING: When the product is used in "Co-Sleeping configuration (fastened to the bed)," before laying down your child, make sure that the fastening belts are fastened and tightened correctly, the product must be fastened to the mattress of the parents' bed and there must be no gaps between the product and the mattress of the parents' bed.

DO NOT use the product if there are any gaps.

· Do not fill any spaces or gaps between the parents' mattress and the crib with pillows, blankets, bedsheets or any other material that may cause the risk of suffocation.

WARNING: To avoid all risks of strangulation, on the top part of the side of the crib in contact with the parents' bed, the top edge of the lowered side of the crib must not be higher than the upper surface of the parents' mattress.

· The product must always be placed on a horizontal surface. Do not place the product onto a sloped surface with your child inside.

· Unattended children must not be left to play near the product.

· Do not use the product without the frame.

· Keep the fastening belts out of reach of children.

· Only use the mattress provided with the product or replacement mattresses approved by My Babiie.

· Do not use more than one mattress in the crib. Only use the mattress supplied with the crib.

WARNING: Do not to use the body of a cradle without its frame.

WARNING: The thickness of the mattress chosen shall be such that the internal vertical height (surface of the top of the mattress to the upper edge of the bed sides) is at least 200 mm in the highest position of the bed base

EN 16890:2017

Your child's safety is your responsibility

If you have a problem with this product or require replacement parts, please visit www.mybabiie.com/support

Register your product at: www.mybabiie.com/warranties

WARNING: Only use the mattress sold with the crib. Do not add a second mattress, choking hazard.

- Newborn babies can suffocate on soft bedding. Avoid placing any pillow or similar items under sleeping infant for additional comfort.
- The reference mark on the inner face of the product shows the maximum thickness of the mattress to use.
- Use the crib in "Co-Sleeping configuration (fastened to the bed)" only with beds of the size indicated in the reference figure at the beginning of the manual.
- Do not leave anything inside the product that might reduce its depth.
- To prevent it becoming trapped, do not place the crib close to walls or obstacles.
- Do not leave any small objects inside the product that might be swallowed.
- Only use spare parts approved by the manufacturer.

Do not attach any accessories to the product that have not been supplied by the manufacturer.

- Do not make adjustments to the product when the child is in it.
- Do not move the product when the child is inside.
- Do not use the product for more than one child at a time.
- The product must be kept away from electrical cables and cords: do not position close to windows where cords, curtains or similar could pose a suffocation or choking hazard. To avoid all risks of strangulation, never give children objects with cords or strings attached, or leave them within their reach.
- Prolonged exposure to direct sunlight can cause the colours of the fabric to fade. After a prolonged exposure of the product to high temperatures, wait a few minutes prior to putting your child in it.
- Keep the product out of reach of children when it is not in use.

WARNING: check to make sure that all of the fasteners have been correctly attached and that the zips are closed and locked right to the end of their travel.

WARNING: do not use the cot with adjustable feet partially or totally retracted and unlocked. In the case of accidental knocks against adjustable feet, return them to the correct position by lifting the crib slightly.

HEIGHT ADJUSTMENT OF THE COT

The crib can be adjusted to different height positions. In order to adjust the height, pull the adjustment lever upwards and lift the crib to the desired position (fig. 7). Repeat this operation on the opposite side.

The base of the crib can be inclined slightly by adjusting the 2 legs to different heights (fig. 8).

WARNING: the crib can be inclined with a maximum variance of 2 positions between one leg and the other (for example: the right leg in position 3 and the left leg in position 1, see fig. 8).

WARNING: The head of the child should always be positioned on the highest side (fig. 9).

Your child's safety is your responsibility

If you have a problem with this product or require replacement parts, please visit www.mybabiie.com/support

Register your product at: www.mybabiie.com/warranties

Co-Sleeping Mode (Fixing to the bed)



The crib can be fixed to the parent's bed (co-sleeping mode). **WARNING – IMPORTANT FOR THE SAFETY OF YOUR CHILD:** this method is only possible with bed types that comply with all of the conditions described in this paragraph. In particular the side support of the crib should always be put close to the parent's mattress and the mattress should always be aligned with the height of the side support for restraint of the crib (see fig. 10). Furthermore, the crib should be firmly fixed to the structure of the parents bed or to the mattress support (net or slats).

WARNING: Check to make sure that the crib in the co-sleeping mode does not interfere with the parent's bed.

WARNING: During use, make sure that the parents bed sheets, blankets etc. do not enter and cover the interior of the crib.

1. Open the side of the crib with the window using the side zips and open them completely (fig. 11). Then press the removable tubular structure release button and remove partially on one side and then on the other. Once this operation has been performed on both sides, lower the bar down to create the side opening.

WARNING: use the crib with the tube lowered, only in the co-sleeping mode.

2. Move the crib close to the parent's bed and check the height of the crib compared with the mattress of the bed.

WARNING: the height of the parent's mattress should always be more than that of the side support for containment of the crib (fig. 12b).

WARNING: Remove the metal bar from the top of the fold down flap to allow crib to sit close to the bed mattress. (fig 12a). Store the metal bar somewhere safe so that it can be re-inserted when used as a stand alone crib.

WARNING: in the co-sleeping mode the 2 legs of the crib should always be adjusted to the same height.

3. In order to fix the crib to the parents bed (co-sleeping mode) use the pair of straps provided.

4. Loop the strap around the side legs of the crib. One strap on each side of the crib. (fig. 13)

5. Pass the belt around the structure of the parent's bed (fig. 14). Repeat this operation on the other side. For easier installation, during fixing of the buckles, we suggest that the crib is kept at a short distance from the parent's bed.

6. Fasten the clips together (fig. 15)

7. Position the oval metal plate against the side of the bed (fig. 16). At this point, move the crib to the side of the parent's bed and tighten by pulling the belt firmly (fig. 17). Carry out this operation on one side and then on the other side, adjusting the belts until the crib is firmly in contact with the parents mattress.

WARNING: before every use always check to make sure that there is no space between the parent's mattress and the side of the crib. If there is, pull the belts firmly to tighten until there's no space and the permitted condition of use has been restored.

WARNING: before every use always check to make sure that bedside crib is flat and level so that it is not tilted at all.

8. Store any excess of belts safely out of the way.

9. Lock the wheels of the crib.

If, during the fixing operations of the crib to the parent's bed, it is not possible to slide the feet of the crib under the parent's bed, it is still possible to fix the crib following the operations described in the previous points as one side of the cribs feet are on springs, allowing them to move inwards to allow the crib to be brought in close to the parents bed. Make sure the wheels are locked into position before use.

WARNING: Use of the product is only permitted with beds and/or mattresses with straight sides. Use of the product with round beds and/or mattresses or water beds is not permitted.

WARNING: When the product is used in the "Co-Sleeping Mode" (fixing to the bed), it should always be fitted to the long side of access to the bed. DO NOT fix the product to the head or bottom of the bed.

Your child's safety is your responsibility

If you have a problem with this product or require replacement parts, please visit www.mybabiie.com/support

Register your product at: www.mybabiie.com/warranties

MAINTENANCE ADVICE

The crib and the mattress have a resistant fabric cover, which is completely removable and washable.

The removal/application activities should be carried out by adults only. On a regular basis check the condition of the product and the presence of any possible damage. In the case of damage do not use it and keep it out of the reach of children.

For washing of the fabrics, carefully comply with the instructions indicated on the label.

For cleaning do not use solvents, abrasive products or aggressive products.



Hand wash in cold water



Do not iron



Do not bleach



Do not dry clean



Do not tumble dry

After each wash check the resistance of the fabric and of the stitching.

WARNING: During the removal and/or application of the lining, handle the fabric carefully in order to avoid accidental damage or tears.

WARNING: The removal and/or application operations may take a few minutes and should be carried out by an adult.

MAKING THE BED

It is possible to unfasten the crib from the parents' bed in order to make the bed easily. Just unfasten the buckles located below the fabric finish.

To re-secure the crib to the parents' bed, pull once again the belts to make sure the crib is properly and firmly secured to the parents' bed. Pay attention to follow all the steps previously mentioned in paragraph "co-sleeping mode (Fixing to the bed)".

DISASSEMBLING THE CRIB

The crib can be fully disassembled in order to store it in the bag supplied with the product. To disassemble the crib, remove the crib from the frame then disassemble the frame.

Your child's safety is your responsibility

If you have a problem with this product or require replacement parts, please visit www.mybabiie.com/support

Register your product at: www.mybabiie.com/warranties

MyBabiie®

For little people who dream big

Register your product at:

www.mybabiie.com/warranties

**In the first instance of needing assistance please
contact your original place of purchase.**

This product qualifies for 12 month warranty when
registered through our site

The product is guaranteed against any conformity defect in normal conditions of use as
provided for by the instructions for use. The warranty shall not therefore apply in the case of
damages caused by improper use, wear or accidental events.

Follow us!



/MyBabiie



@MyBabiieOfficial



@MyBabiie



/MyBabiie

My Babiie. Part of My Companiie Ltd
Repton Manor, Repton Avenue, Ashford, Kent, TN23 3GP